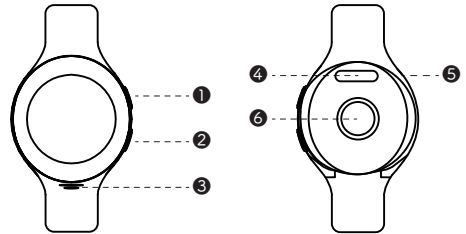




CAUTION: This product is not a toy. Do not allow small children or pets to play with myFirst Fone D3s. Choking hazard; contains small parts.

GPS: Accuracy of location may be affected by network coverage, atmospheric factors and signal strength.

About the Product

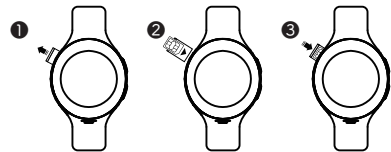


- 1 Button On
- 2 Back/SOS
- 3 Speaker

- 4 Charging port
- 5 SIM card slot
- 6 Proximity sensor

Sim Card Installation

1. Turn the device off and eject the SIM card tray from the device.
2. Install the nanoSIM card into the tray with metal contacts facing up.
3. Insert the SIM card tray back into the SIM card slot.



Note: if your SIM card requires a PIN code input, this feature should be deactivated before installing the SIM card into myFirst Fone D3s.

myFirst Fone D3s

User Manual

myFirst Fone D3s – 2G kids smartwatch-phone with GPS/ A-GPS/LBS/ Wi-Fi tracking, voice calling capability and an SOS button. myFirst Fone D3s is designed to track your child's location as well as receive and return calls and messages.

Deactivate pin code: Install the SIM card into a phone. Navigate to the SIM card settings. Select the option to disable the PIN code input requirement. Save the settings onto the SIM card. Remove the SIM card from the phone and install it into myFirst Fone D3s

Make sure that SIM card can access the Internet, receive/send calls and messages. myFirst Fone D3s works in 2G network (GSM 900 / 1800 / 850 / 1900).

Application Download & Registration



1. Download 'myFirst Fone' App from either Google Play Store or Apple App Store.
2. Open the application and press 'Register' to begin creating an account.
3. Fill in the email account and press 'Send' to receive the verification code to be entered into the space given.
4. Enter the rest of the required fields to complete the registration.

Note: Verification code will be sent via email. If you don't receive it, please wait for 30min and retry.

Binding to Smartphone

1. Switch on device. Device will display binding QR code to be scanned on your phone.
2. Open myFirst Fone application. Press 'Add Device'. The app's QR scanner will appear on your phone.
3. Scan the binding QR code on myFirst Fone D3s.
4. myFirst Fone D3s is paired and connected with the app.

Note: The 1st user to scan and register myFirst Fone D3s is set as 'Administrator' and has full access to all settings.

APP DESCRIPTION

Home screen

- Call button: press to make a call to the smartwatch.
- Contacts: edit the list of the contacts and family member, who can monitor the device.
- Pedometer: select to view the number of steps made by the child.
- Manual location request: press to manually request the live smartwatch location.

Voice chat

- Voice message button: hold the button to record the voice message, let go to send. Maximum duration of the voice message is 15 seconds.
- Voice messages: short press to listen to a message.

Care call

- Parents can now listen in on their kid's activities to ensure they are safe. Press the ear icon on the app to begin. The app will call and connect to the watch without notifying the child.
- Caution: This feature is intended for parents to keep safe track of their child. Any misuse or abuse of the care call may be subjected to prosecution.

WATCH FUNCTIONS

Incoming and outgoing calls

- Choose one contact to make a call. Click the power button to end the call.

Voice chat

- Navigate the screen to enter the "Voice chat", select one of the contacts.
- Press the microphone icon, hold it to record the message and let go to send. myFirst Fone D3s can receive voice messages, emojis and stickers from the app, as well as send the voice messages, photos, emojis and stickers to the app.
- Voice chat in the app: choose "Voice chat" and start chatting and exchanging stickers and emojis with myFirst Fone D3s.
- Message duration is limited to 15 seconds.

Pedometer

- Navigate the screen to select the “Pedometer”. Daily activity monitoring based on the number of steps.

SOS

- Press and hold the button for 5 seconds, to activate the SOS signal. All family members will receive the SOS notification, smartwatch location coordinates, as well as a 30second sound recording.

Shake to make friends

- Navigate the screen to the “Settings” option and choose the “Find friends” option from the list. You can add users of the same myFirst Fone D3s to the list, the other user’s device should have “Friends” mode turned on and be within 2m. To add the user to the list, just shake the smartwatch.

Stopwatch

- Navigate the screen to the “Settings” option and choose the “Stopwatch” option from the list.

Brightness settings

- Navigate the screen to the “Settings” option and choose the “Brightness” option from the list. Choose from 3 available brightness settings.

Volume settings

- Navigate the screen to the “Settings” option and choose the “Sounds” option from the list. Choose one of the 3 available settings for the voice and ringtone volume.

Changing the theme

1. Press the home screen for 3 seconds to switch to other theme.
2. Swipe left or right to choose the theme
3. Press the desired theme to confirm and set.

FAQ

Q: Which SIM card is required?

A: myFirst Fone D3s works with nanoSIM cards that support 2G networks (GSM 900/1800/850/1900 MHz)

Q: How long does the battery last in standby mode?

A: Actual working time varies based on the smartwatch’s settings and the frequency of the location updates. myFirst Fone D3s is rated for up to 72 working hours in standby mode.

Q: Are there any age requirements to use the myFirst Fone D3s?

A: There are no age requirements, but the device is best suited to children between 3 to 12 years old.

Q: Are the materials that myFirst Fone D3s made from safe?

A: All the materials used in the myFirst Fone D3s production comply with European standards.

Q: Can myFirst Fone D3s harm my child’s health with radiation?

A: The myFirst Fone D3s cell module’s radiation level is much lower than the limit set by the European standard.

Q: Is myFirst Fone D3s waterproof?

A: myFirst Fone D3s is protected from sweat, drips of water, rain and can be briefly submerged into the water to a depth of up to 1 meter, however the device should be removed before swimming or taking a shower.

Q: What should I do if QR code scan fails?

A: Repeat the scan in better lighting conditions, adjust the focus of your smartphone’s camera to correctly focus on the QR code. Alternatively, you can input the pairing number manually. And also check the availability of Internet traffic and the ability of the SIM card to work in 2G networks.

Q: Is connection to the Internet required for the geo-positioning function to work?

A: Connection to the Internet is required to send the location data.

Q: Can the watch's battery explode when exposed to high temperature or during charging?

A: myFirst Fone D3s is equipped with a safe and reliable helium polymer lithium ion battery, which is safer than the standard lithium battery used in many modern mobile devices. The helium polymer lithium ion battery uses special colloidal electrolyte, which does not emit gas even if the liquid part of the battery is boiling, granting safety and eliminating the risk of an explosion. This type of battery has shown impressive results in all kinds of safety tests, including the heating, poking and hitting. However, you should not carry out any tests yourself.

Remarks

- The manufacturer holds the right to change the construction, included accessories and contents of the box, or the manufacturing technique without any notice in order to improve any properties of the device, given that this does not void any quality standards and laws of the country of manufacturing/transit/sale.
- Do not let small children and pets to play with myFirst Fone D3s. The device contains small parts, which can cause harm.
- myFirst Fone D3s is IP65 splash proof. The device is protected from drips of water, rain, sweat, but the watch should be removed before swimming or taking a shower.
- In case of submersion, remove the device from the water immediately, switch it off and clean with a dry cloth.
- Do not submerge the device into salt water.
- Staying indoors, atmospheric conditions, as well as other signal distortion sources can harm the GPS tracking accuracy.
- Keep away from fire and high temperatures.
- Do not allow dust or dirt to enter the device.
- Do not drop, hit or shake the device. Careless handling can lead to damage of the integrated board and mechanical parts.
- Charger output must be: 5V 1A (included USB charging device).
- Make sure to input the correct phone number

including the country code. For example: + (country code) xxxxxxxx. Do not use symbols such as '(', ')', '+', '-', ''.

- myFirst Fone D3s works on 2G networks. Photo sharing function, calls and automatic updates can consume a large amount of data. Choose the appropriate carrier plan and set the Wi-Fi passwords for frequently visited places.

Regulatory Conformance

Hereby, Oaxis Asia Pte Ltd declares that the radio equipment type KW1304 is in compliance with Directive 2014/53/EU. Note: Observe the national local regulations in the location where the device is to be used. This device may be restricted for use in some or all member states of the European Union (EU).

FCC

This equipment complies with FCC RF radiation exposure limits set forth for an uncontrolled environment. This device complies with part 15 of the FCC rules. Operation is subject to the following two conditions: (1) this device may not cause harmful interference, and (2) this device must accept any interference received, including interference that may cause undesired operation. Note: The manufacturer is not responsible for any radio or TV interference caused by unauthorized modifications to this equipment. Such modifications could void the user's authority to operate the equipment.